

# CORGI **EXACT 70 PLUS II**








**Computerised wheel aligner with 8-CCD-camera sensor heads**  
The best choice for wheel alignment professionals



# EXACT 70 PLUS II



## 8-sensor CCD sensor heads

- SMART LEVEL 
- HIGH-POWER 
- EASY SERVICE 
- RX2.4 RADIO 
- RBS 
- ORP 
- WIDE TOE 
- LNSS 
- OVERSIZE BOOM 
- SMART SPOILER 



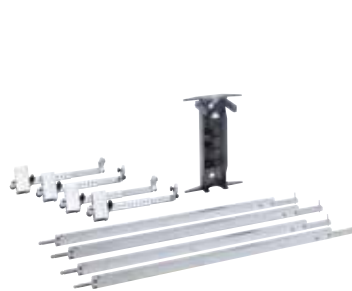
**1** CCD sensor heads available in wireless or cable versions. Wireless version on 2.4 GHz industrial radio frequency. Battery charging on cabinet. The battery charger can support both the sensor heads and the clamps.

**2** Roomy internal storage space for protecting PC and printer. Document wallet. Professional PC.

## TRUCK ACCESSORIES



● Set of 4 ROC skip clamps for truck



● Truck and trailer alignment kit



● 17,5-25" truck bracket

## SOFTWARE



**EXACT PLUS**, the Corghi wheel alignment program for the most demanding professional. **EXACT PLUS** works with the **multilingual Windows 10 IoT operating system**. Clear, intuitive graphics, user-friendly, complete and customisable.

- Manual toe curve measurement and adjustment procedure.
- Push-type, 2 and 3 point and single-sensor ROC and ROC skip option.
- Car and van databank with more than 84,000 vehicles. Optional truck and bus databanks with more than 3,000 vehicles.
- “Easy Caster”: quick caster measurement with no brakes on sensor heads.
- Animated tutor guides preparation of vehicle for alignment.
- “Quick Check”: complete 2-head front axle measurement and adjustment procedure.
- Cradle Adjustment.
- Quick job record data input.
- Continuous sensor calibration checking.
- *Truck and trailer procedure (optional).*
- Adjustment help, schematic slides or animations (optional).



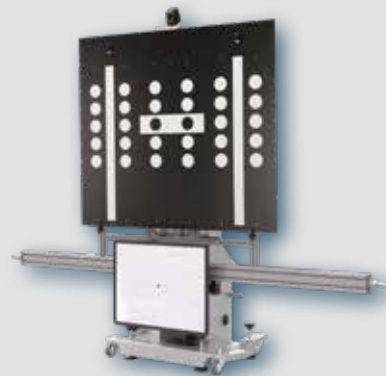
## COMPATIBLE WITH



The wheel aligner is compatible with the new **PROADAS** universal system used for the **calibration of driver assistance systems** on new generation vehicles.

Using the wheel aligner sensors mounted on the PROADAS system, the system for calibrating the camera and radar on board the vehicle **can be aligned precisely and quickly**. Manufacturers recommend calibrating ADAS systems after aligning the vehicle.

For more information **visit the PROADAS product section** on our website.



## CAR ACCESSORIES



● 10-21" professional bracket



● BMW-MERCEDES-PORSCHE clamp



● 9-21" quick wheel clamp



● SCC double pins

## Operating configuration

- Wheeled cabinet
- Wireless or cable sensor heads
- Professional PC
  - INTEL motherboard
  - 256 MB RAM minimum
  - 80 GB HD minimum
  - DVD reader
  - High-speed USB 2.0 port
  - Ethernet network circuit board
  - Keyboard
- multilingual Windows 10 IoT
- EXACT PLUS alignment program
- Asa Network, RH-Meter and Romess CM-09606 compatible
- Pedal depressor
- Steering clamp

## Optional accessories

- Optical mouse
- IR remote control
- Universal support for LCD monitor
- 17 – 19 - 20" LCD colour monitor
- Colour inkjet printer
- 10-26" or 10-19" car wheel brackets with self-centring system
- 9-21" quick wheel clamps
- BMW - Mercedes wheel clamps
- 10-25" truck wheel clamps with self-centring system
- ROC skip clamps for fleet hd trucks
- Special procedures: MULTILINK, RADAR, trucks and trailers, vehicle weight and Specialty Product catalogue
- Adjustment help, schematic slides or animations
- External battery charger for charging batteries with PC off
- Special car constructor configurations
- Complete range of accessories

## TECHNICAL DATA

### Measuring ranges

Total toe	± 48°
Half toe	± 24°
Camber	± 10°
Caster	± 30°
King-pin	± 30°
Set back	± 22°
Thrust angle	± 22°
Steering angle	± 22°

### Power supply

Central unit	90-260 Vca (50-60 Hz) 1ph
Central unit consumption	0, 4 kW
Sensors	800x135x210 mm

### Dimensions

Width x depth x height	800x630x1710 mm
With sensors	1350x1320x1710 mm

